

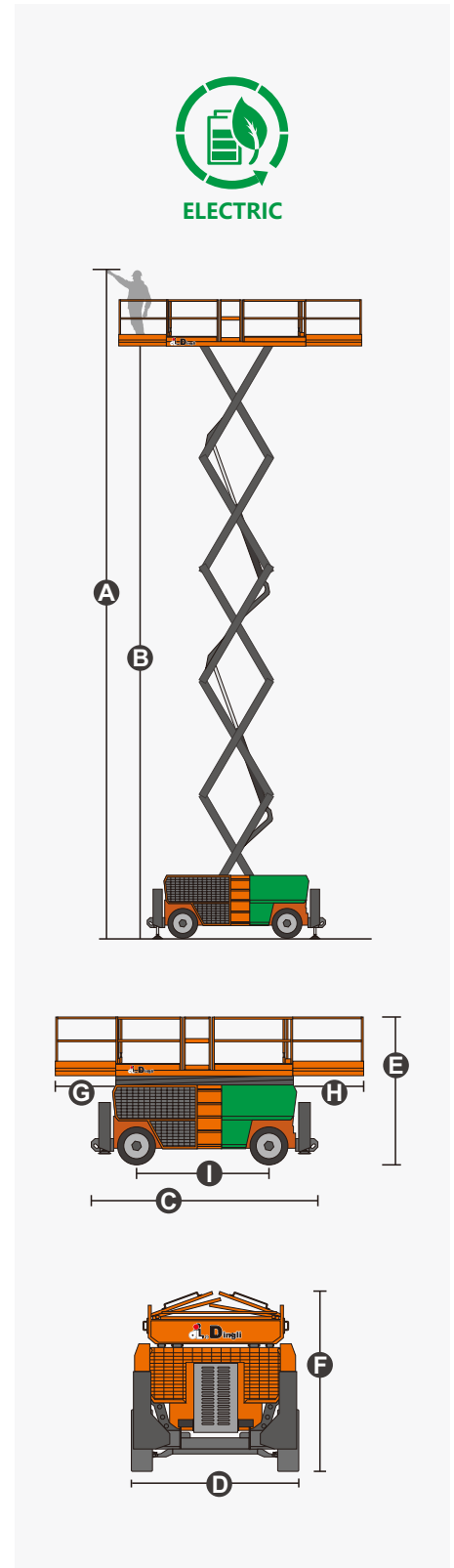
## SPECIFICATIONS

| Size  | Metric      | British          |
|---|-------------|------------------|
| Max. Working Height <b>A</b>                | 18.00m      | 59ft 1in         |
| Max. Platform Height <b>B</b>               | 16.00m      | 52ft 6in         |
| Overall Length <b>C</b>                     | 4.88m       | 16ft             |
| Overall Width <b>D</b>                      | 2.29m       | 7ft 6in          |
| Overall Height(Rails Up) <b>E</b>           | 3.19m       | 10ft 6in         |
| Overall Height(Rails Down) <b>F</b>         | 2.49m       | 8ft 2in          |
| Platform Size(Length×Width)                 | 3.98m×1.83m | 13ft 1in ×6ft    |
| Platform Extension Size <b>G</b> / <b>H</b> | 1.43m/1.16m | 4ft 8in/3ft 10in |
| Ground Clearance                            | 0.30m       | 1ft              |
| Wheelbase <b>I</b>                          | 2.86m       | 9ft 5in          |
| Turning Radius(Inside/Outside)              | 2.35m/5.20m | 7ft 9in/17ft 1in |
| Tyres                                       | 33×12-20    | 33×12-20         |

| Performance                     |           |           |
|---------------------------------|-----------|-----------|
| S.W.L                           | 680kg     | 1499lb    |
| S.W.L On Extension              | 227kg     | 500lb     |
| Max. Occupants (Indoor/Outdoor) | 4/4       | 4/4       |
| Gradeability                    | 40%       | 40%       |
| Travel Speed(Stowed)            | 6.0km/h   | 3.73mph   |
| Travel Speed(Raised)            | 1.0km/h   | 0.62mph   |
| Max. Working Slope              | X-2°/Y-3° | X-2°/Y-3° |
| Up/Down Speed                   | 80/70sec  | 80/70sec  |

| Weight         |        |         |
|----------------|--------|---------|
| Overall Weight | 8900kg | 19621lb |

| Power          |               |               |
|----------------|---------------|---------------|
| Hydraulic Tank | 130L          | 34gal         |
| Battery        | 48V/450Ah     | 48V/450Ah     |
| Charger        | 48V/60A       | 48V/60A       |
| Driving Motor  | 4×32VAC/3.3kW | 4×32VAC/3.3kW |
| Lifting Motor  | 2×48VDC/8.0kW | 2×48VDC/8.0kW |

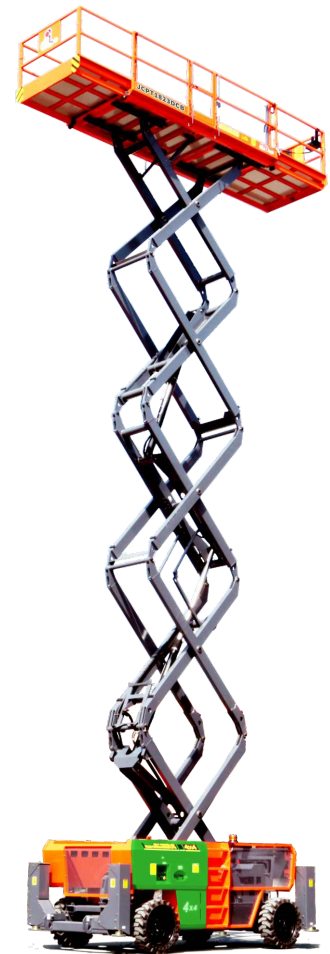


CE EN 280

## FEATURES

### Standard Items

- Proportional Joystick Controls
- Self-Locking Gates
- Dual Slide-Out Platform Extension Deck
- Four-Wheel Drive
- Two-Wheel Steering
- Automatic Braking System
- Self-Weight Lowering System
- Tubing Explosion-Proof System
- Onboard Fault Diagnostic System
- Tilt Alarm
- Motion Alarm
- Horn
- Hour Meter
- Charging Protection System
- Flashing LED Beacon
- Foldable Guard Rails
- Drive Enable
- Charging Indicator
- Manual Brake Release
- Lanyard Attachment Point
- Standard Transport Forklift Pockets
- Tie-Down And Lifting Points
- Automatic Leveling Hydraulic Outriggers
- Emergency Pump
- Emergency Stop Button
- Platform Load Sense System
- Oscillating Axle Chassis



### ZHEJIANG DINGLI MACHINERY CO., LTD.

Address: No.188 Qihang Road,Deqing,Zhejiang P.R.C 313219

Telephone: +86(572)8681688

E-Mail: [export@cndingli.com](mailto:export@cndingli.com)

[Https://en.cndingli.com](https://en.cndingli.com)

Due to continuous technology updates, technical parameters are subject to change without notice. This picture book is for reference only, the actual product shall prevail. The copyright is owned by zhejiang dingli, any content may not be copied for any purpose without written permission.

2024-05

